

Oxygen Sensor

M18 ALU Sinter Cap

SO-D3-xxx-AxxxC (6 pol cable and RAST 2.5 connector)

- Measurement ranges from 10 ppm to 96% oxygen
- Stable Sensor characteristic across range
- Sensor signal not affected by temperature
- Zirconium Dioxide (ZrO₂) technology

Description

The Sensore SO-D3 series delivers accurate oxygen measurement from ppm to percent levels in a sturdy M18-threaded aluminum housing, with a stainless steel sinter cap. Using proven zirconium dioxide technology, these sensors provide long life and stable performance with minimal impact from temperature, pressure, or interfering gases.



Specifications

Sensor technology	
Measuring Gas	Oxygen (O ₂)
Measuring Principle:	Limiting current, ZrO ₂ -cell
Sensor cell	
Bias voltage	0.7...1.6 V _{DC}
Resulting sensor current	0...250 µA 0...420 µA (96 % measurement range)
Sensor heater (platinum heater element)	
Basic heater operation	Constant heater voltage
Warm up procedure	30 seconds heater voltage ramp-up or heater current limitation <0.5 A
Constant heater voltage	3.9 VDC (depends on application)
Power consumption	1.8 W (depends on application)
Heater resistance at 25°C	3.25 Ω ± 0.25 Ω
Advanced heater operation	Active heater resistance control
Environmental conditions	
Maximum operating temperature	200 °C limited by cable assembly
Humidity	non-condensing (max. 90 % r.h. @ 40 °C)
Pressure range*	700-1300 mbar (absolute)
*Contact SENSORE for extended pressure range options	
Reliability data under clean laboratory conditions	
Lifetime (MTTF)	typical 10 years
Calibration stability (MTTF)	typical 20 000 hours
Vibration resistance	Sensors meet the European Norm EN60068-2-6 (Sinusoidal vibration tests)

Housing and gas interface	
Type	SO-D3
Housing	M18-threaded aluminum housing
Dimensions see also next page	Thread: M18x1.5 , tot. length = 50.6 mm fastening with 22 mm wrench
Housing temperature during operation	70 °C (at ambient temperature of 25 °C)
Gas exchange	The porous sinter cap will allow a convection flow through the cap, if directly placed into an air flow.
Response time (τ ₉₀)	< 10 seconds in an air flow
Maximum flow velocity	6 m/s (@ 25°C)
Flow-through option	See flow-through chamber next page

Part number ordering information	
Sensor part number	Measuring range*
SO-D3-001	10 ppm O ₂ – 1000 ppm O ₂
SO-D3-010	0.01 % O ₂ – 1.0 % O ₂
SO-D3-020	0.01 % O ₂ – 2.0 % O ₂
SO-D3-050	0.05 % O ₂ – 5.0 % O ₂
SO-D3-250	0.10 % O ₂ – 25.0 % O ₂
SO-D3-960	1.00 % O ₂ – 96.0 % O ₂

*Operation outside the specified measuring range can cause a permanent damage of the electrode

Optional cable number	
SO-D3-xxx-A100C	100 cm cable, 6 pole, Rast 2.5 connector
SO-D3-xxx-A300C	300cm cable, 6 pole, Rast 2.5 connector

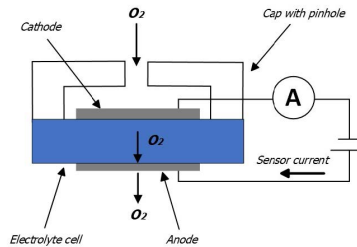
Sensor specification for different O₂ measurement ranges with N₂ balance

Sensor part number	Measuring range*	Output current at O ₂ concentration	Accuracy	Reproducibility	Bias voltage
SO-D3-001	10 – 1000 ppm O ₂	150 – 250 µA at 1000 ppm O ₂	± 20 ppm O ₂	< 10 ppm O ₂	0.7 V _{DC}
SO-D3-010	0.01 – 1.0 % O ₂	150 – 250 µA at 1.0 % O ₂	± 100 ppm O ₂	< 100 ppm O ₂	0.75 V _{DC}
SO-D3-020	0.01 – 2.0 % O ₂	150 – 250 µA at 2.0 % O ₂	± 200 ppm O ₂	< 100 ppm O ₂	0.75 V _{DC}
SO-D3-050	0.05 – 5.0 % O ₂	150 – 250 µA at 5.0 % O ₂	± 500 ppm O ₂	< 250 ppm O ₂	0.8 V _{DC}
SO-D3-250	0.10 – 25.0 % O ₂	100 – 200 µA at 20.9 % O ₂	± 0.25 % O ₂	< 0.1 % O ₂	0.85 V _{DC}
SO-D3-250	1.0 – 96.0 % O ₂	15 – 30 µA at 20.9 % O ₂	± 1.00 % O ₂	< 0.2 % O ₂	1.0 V _{DC} **

Operation outside the specified measuring range can cause a permanent damage of the electrode

** If the sensor is mainly operated between 70 and 96.0% O₂ bias voltages up to 1.6 VDC can be applied

Sensor principle

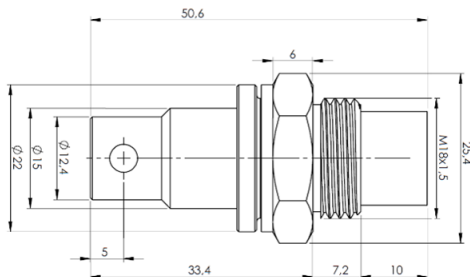


Sensor characteristic

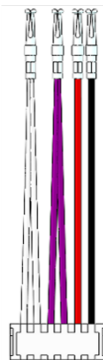
Sensor Characteristic	
$I_s(O_2) = -k \cdot \ln\left(1 - \frac{[O_2]}{100}\right)$	I _s (O ₂) Sensor current in µA [O ₂] Oxygen concentration in % k specific constant of sensor

Housing dimensions (mm)

22mm wrench size

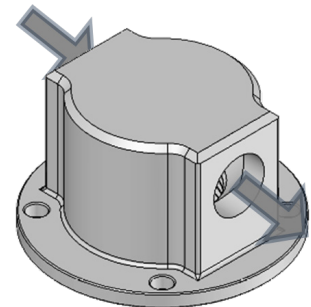


6 pole cable with Rast 2.5 connector



Optional flowthrough chamber M18

Aluminum, two inlets: G 1/8 thread



Function	6 pole cable
Heater H+	violet 1
Heater HS+	violet 2
Heater H-	white 1
Heater HS-	white 2
Sensor S+	red
Sensor S-	black

HS+ and HS- are sense lines

For electronics control board option see Datasheet "GSB- Generic Sensor Board"

Generic Sensor Board (GSB) provides a standard connection for board (solder) or cable mount sensors.

Power supply: 12V_{DC} 0.5 A. Linear signal outputs: 0-5V_{DC}, 4-20 mA and digital RS232 outputs.

Customers should test under their own conditions to ensure the equipment is suitable for the intended application(s). We adopt a continuous development program, which sometimes necessitates specification changes without notice.